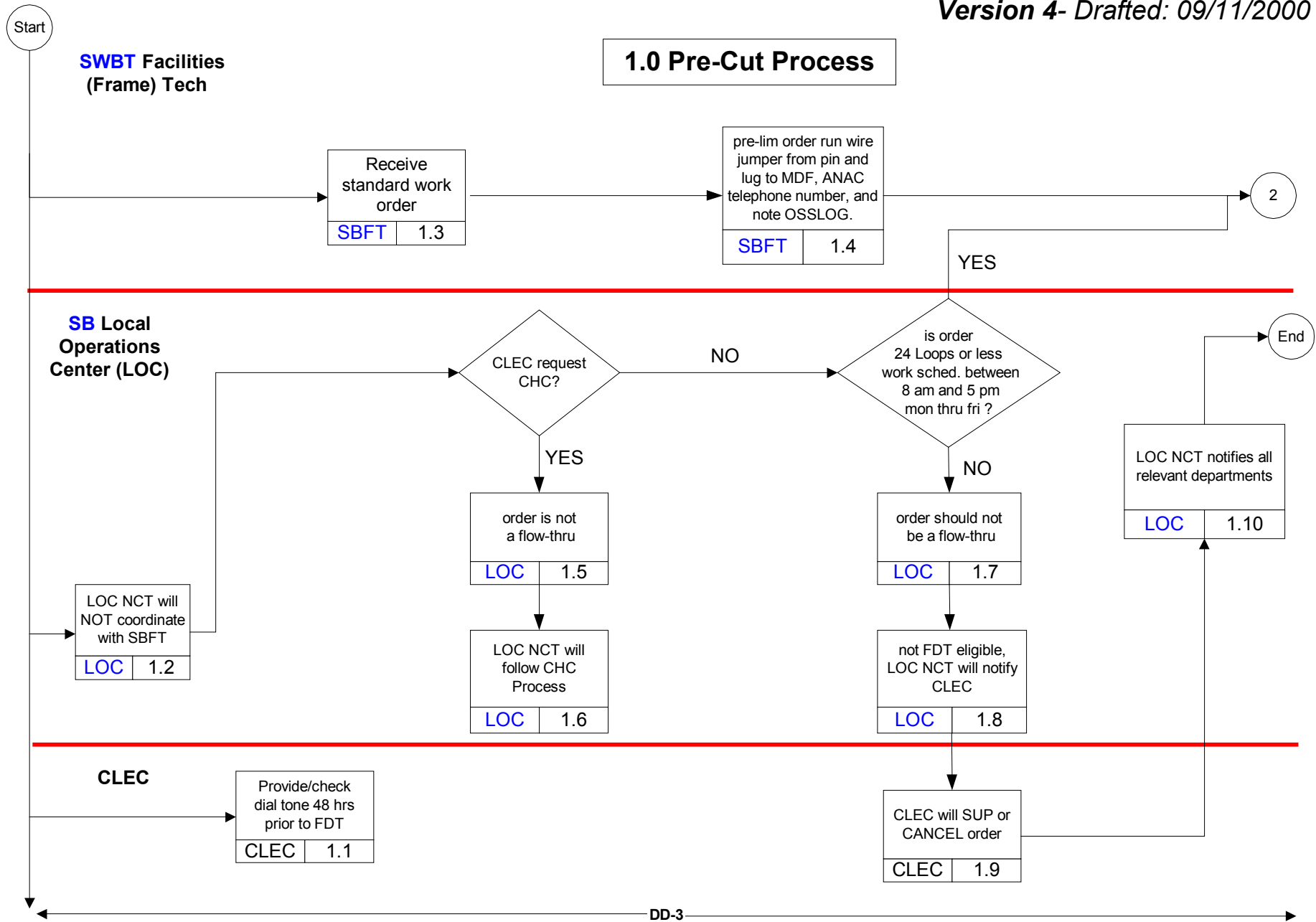


# Southwestern Bell Telephone (SWBT)/CLEC FRAME DUE TIME (FDT) Process

Version 4- Drafted: 09/11/2000

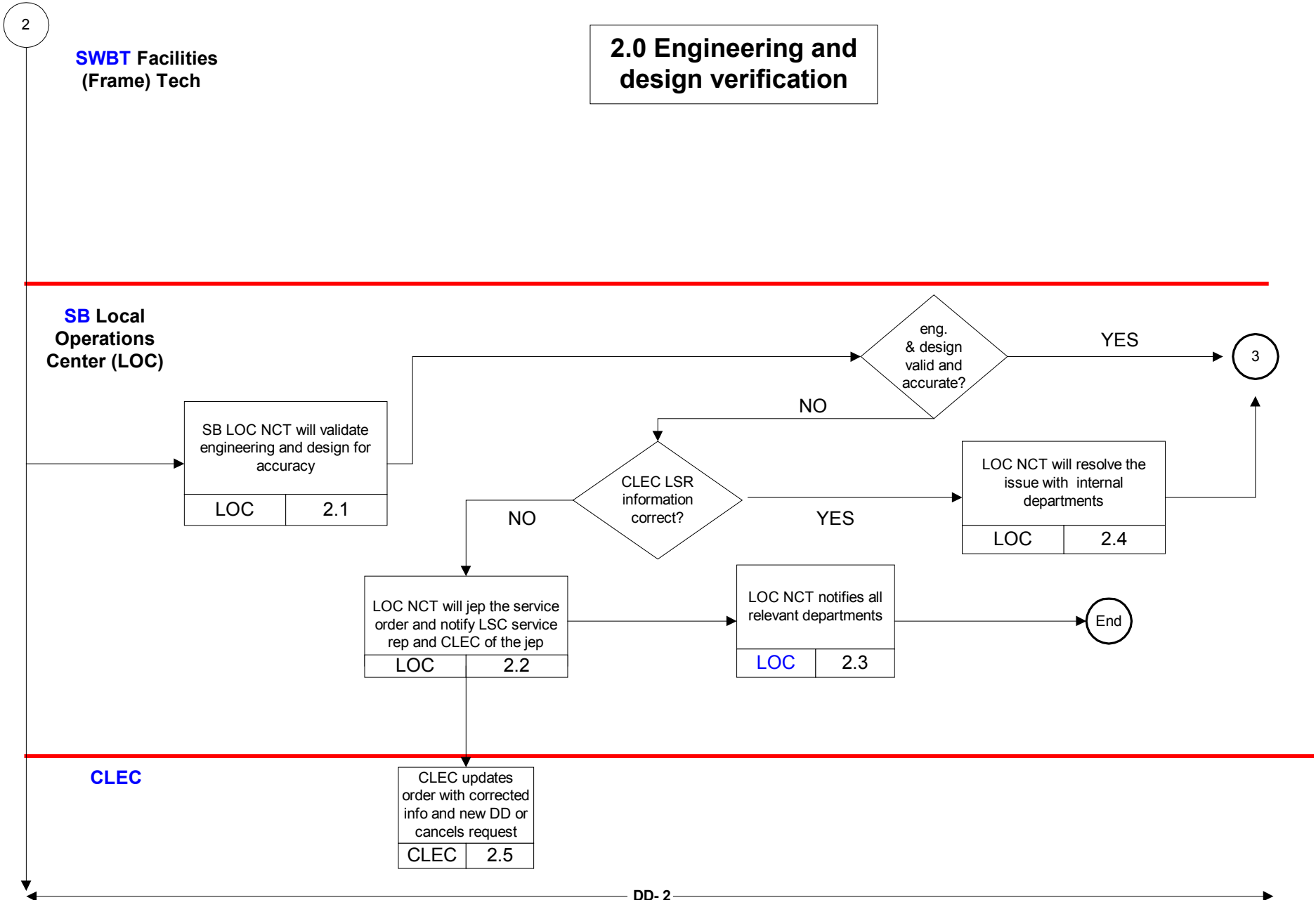


DD-3

This process flow is a guideline for CLECs who coordinate LNP conversions with SWBT. It is a working Document subject to change without written notice.

# Southwestern Bell Telephone (SWBT)/CLEC FRAME DUE TIME (FDT) Process

Version 4- Drafted: 09/11/2000



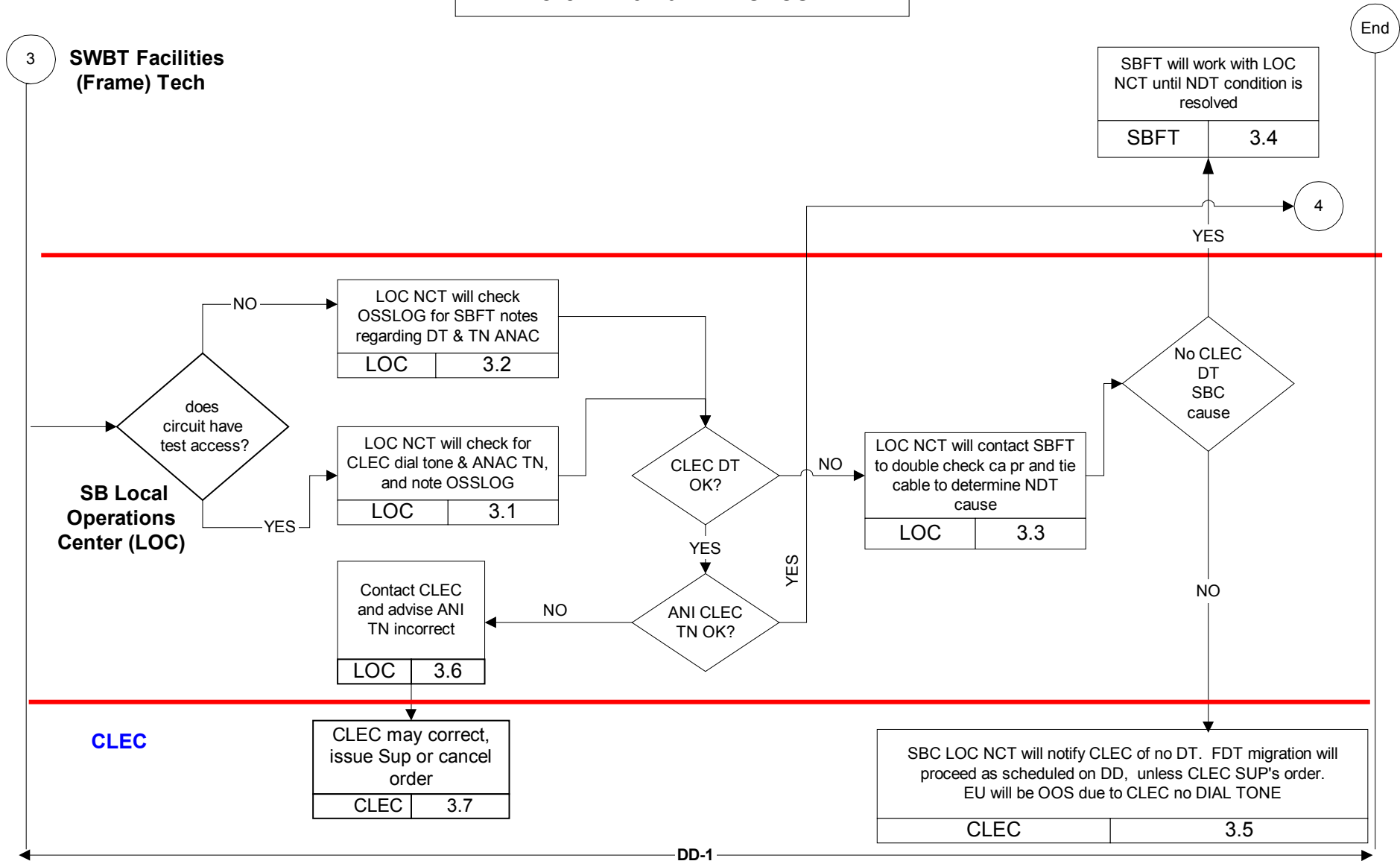
DD- 2

This process flow is a guideline for CLECs who coordinate LNP conversions with SWBT. It is a working Document subject to change without written notice.

# Southwestern Bell Telephone (SWBT)/CLEC FRAME DUE TIME (FDT) Process

Version 4- Drafted: 09/11/2000

## 3.0 DT and ANI check

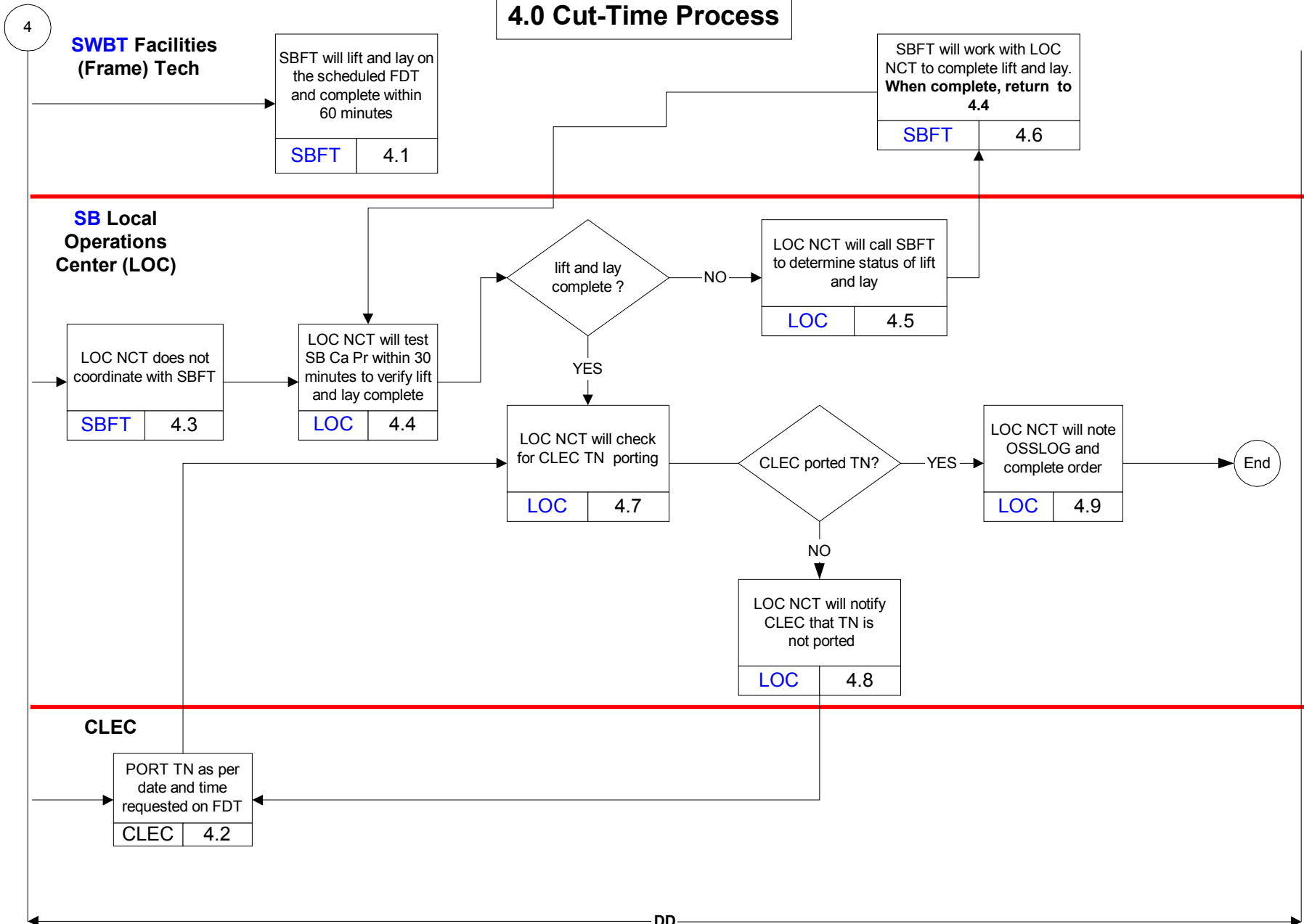


This process flow is a guideline for CLECs who coordinate LNP conversions with SWBT. It is a working Document subject to change without written notice.

# Southwestern Bell Telephone (SWBT)/CLEC FRAME DUE TIME (FDT) Process

Version 4- Drafted: 09/11/2000

## 4.0 Cut-Time Process



This process flow is a guideline for CLECs who coordinate LNP conversions with SWBT. It is a working Document subject to change without written notice.

DD

# Southwestern Bell Telephone (SWBT)/CLEC FRAME DUE TIME (FDT) Process

Version 4- Drafted: 09/11/2000

## 1.0 Pre-Cut Process

- 1.1 CLEC will establish their dial tone 2 days prior to the scheduled cut date.
- 1.2 LOC Network Center Technician (NCT) will not coordinate with frame
- 1.3 SB Facilities Tech (SBFT) will receive standard work order.
- 1.4 SBFT will prelim the order, and run wire jumper from pin & lug to Main Distribution Frame (MDF). If dial tone is present, SBFT will ANAC TN and note osslog.

***A decision diamond is inserted here as to whether or not CLEC requested CHC. If CHC was requested, continue on to 1.5. If not, continue on to next decision diamond.***

***A decision diamond is inserted here as to whether or not an Unbundled Loop (UL) meets FDT criteria of 24 or less loops or ports, work scheduled between 8 am and 5 pm (CST) -- Monday thru Friday. If UL is FDT flow thru, continue on to 2.0***

- 1.5 Order does not meet FDT flow-thru criteria.
- 1.6 LOC NCT will follow CHC process
- 1.7 Order should not be a flow-thru
- 1.8 LOC NCT will notify CLEC not FDT eligible.
- 1.9 CLEC will SUP or Cancel Order.
- 1.10 CLEC SUPs or cancels order, LOC NCT notifies all relevant downstream departments.

This process flow is a guideline for CLECs who coordinate LNP conversions with SWBT. It is a working Document subject to change without written notice.

## Southwestern Bell Telephone (SWBT)/CLEC FRAME DUE TIME (FDT) Process

Version 4- Drafted: 09/11/2000

### 2.0 Engineering and Design Verification

2.1 LOC NCT will verify orders and validate engineering and design for accuracy.

***A decision diamond is inserted here as to whether or not the engineering and design is valid and accurate. If order is valid and accurate continue to 3.0.***

***A decision diamond is inserted here as to whether or not the information provided on the CLEC LSR is correct. If information is correct continue to 2.4.***

2.2 LOC NCT will jep the service order and notify LSC service rep and CLEC of the jep.

2.3 LOC NCT notifies all relevant departments.

2.4 LOC NCT will call the LSC and request the information on the order corrected. LSC will re-issue order with correct information. LOC NCT will make every attempt to meet the migration window requested by the CLEC.

2.5 CLEC updates order with corrected information and new DD or cancel the request.

## Southwestern Bell Telephone (SWBT)/CLEC FRAME DUE TIME (FDT) Process

Version 4- Drafted: 09/11/2000

### 3.0 DT and ANI check

***A decision diamond is inserted here as to whether or not the circuit has test access.***

- 3.1 If circuit has test access, SB LOC NCT will check the CLEC Dial Tone (DT) and ANAC the number using the Automatic Number Identification (ANI) using 1-800-346-0152 and document response in OSSLOG.
- 3.2 If circuit does not have test access, SB LOC NCT will check SBFT log notes for CLEC dial tone and ANAC information.
- 3.3 SB LOC NCT will contact SBFT to double check cable pair (Ca Pr) and tie cable to determine root cause.

***A decision diamond is inserted here as to whether or not CLEC DT is OK. If CLEC DT is OK, continue to the next decision diamond. If CLEC DT is not OK go to 3.4***

***A decision diamond is inserted here as to whether or not CLEC TN ANI is correct. If CLEC TN/ANI is correct continue to 4.0 if not correct continue to 3.6.***

- 3.4 LOC NCT will work with SBFT to correct SB no dial tone condition; LOC NCT will escalate as necessary to resolve no dial tone condition.

***A decision diamond is inserted here as to whether or not no DT is SB cause. If the no DT condition is SB cause, continue on to 3.7.***

- 3.5 FDT migration will proceed as scheduled on DD. End user may be out of service due to CLEC no dial tone.
- 3.6 The SB LOC NCT will notify CLEC that ANAC ANI Number is incorrect.
- 3.7 CLEC will issue SUP or CANCEL Order.

This process flow is a guideline for CLECs who coordinate LNP conversions with SWBT. It is a working Document subject to change without written notice.

## Southwestern Bell Telephone (SWBT)/CLEC FRAME DUE TIME (FDT) Process

Version 4- Drafted: 09/11/2000

### 4.0 Cut time Process

- 4.1 SBFT will lift and lay as per FDT time on order and complete lift and lay as within 60 minutes.
- 4.2 CLEC will port TN as per the date and time requested on LSR.
- 4.3 LOC NCT will not call frame; LOC NCT will monitor FDT migration to minimize EU service disruptions.
- 4.4 LOC NCT will test SB Ca Pr within 30 minutes to determine if the lift and lay has been completed by SBFT.

***A decision diamond is inserted here as to whether or not lift and lay has been completed by SBFT. If lift and lay has been completed by SBFT, then continue to 4.7.***

- 4.5 SB LOC NCT will call and notify CO SBFT and request lift and lay status.
- 4.6 CO SBFT will double check Ca Pr and Tie Cable and work with LOC NCT to complete lift and lay. LOC NCT will escalate as necessary to successfully complete SBFT lift and lay.
- 4.7 LOC NCT will check/verify that CLEC has ported the TN at the requested time.

***A decision diamond is inserted here as to whether or not CLEC has ported the TN.***

- 4.8 SB LOC NCT will notify CLEC TN not ported.
- 4.9 SB LOC NCT will note OSSLOG and complete order

NOTE: To eliminate a possible service outage, CLEC should notify LOC and LSC via sup and telephone call as soon as the CLEC knows the cut is in jeopardy. However, if the request is not received within four (4) business hours prior to the scheduled conversion time, the end user will likely experience a service outage. (Business hours are M-F 8am-5pm CST.)

This process flow is a guideline for CLECs who coordinate LNP conversions with SWBT. It is a working Document subject to change without written notice.